



IN THE
STYLE OF...

"POMPEII"

by Bastille



KEY OF SONG RECORDING: **A MAJOR**

SONG FORM: **Intro, Verse 1, Chorus, Verse 2, Chorus, Verse 3, Chorus, Outro**

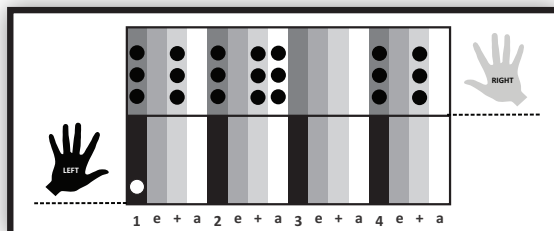
Intro
1X
Verse
4X
Chorus
2X
Outro
1X

D **A** **F#mi** **E**

Chorus
Ending

D **F#mi** **E** **D** **F#mi** **E**

Playing Styles

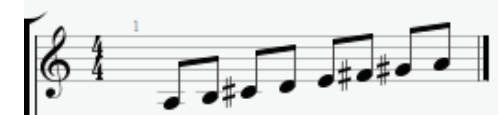


Standard Notation

Playing Styles



Piano Solo



JAM CARD™ SOLO

Place Jam Card™ #5a for **MAJOR SCALE** with the note **"A"** on the root note marker!

JAM CARD™ PROGRESSION

Place Jam Card™ #6a for **SCALE CHORDS** with an A chord as the 1 chord. The main progression of this song is 4 - 1 - 6mi - 5