



IN THE
STYLE OF...

“TATTOOED HEART”

by Ariana Grande



KEY: G MAJOR

TEMPO: 72 BPM

Chords

G	Ami	Bmi	C	D	Emi
I	ii	iii	IV	V	vi

SONG FORM: Verse, Chorus, Verse, Chorus, Bridge, Chorus

Chords in paranthesis are called PIVOT CHORD. The job of these chords is to connect the main 4 chords of the song (G, Emi, C, D) to one another and make the chords of the song flow more naturally. Try playing the song with the pivot chords (for more advanced students) or without the pivot chords (for beginner students).

Ukulele chord diagrams for the song "Tattooed Heart". The diagrams are arranged in three rows, each representing a measure of music. The first row contains G, G, Open E, and Open E. The second row contains Open D, G, F#, B, and Open D. The third row contains C, C, Open D, and Open D. Each chord is represented by a 4-string ukulele fretboard with dots for finger positions and 'x' for muted strings. Pivot chords (Open D, F#, B, and A) are shown in parentheses.

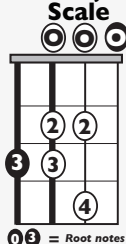
Iconic Notation

Rhythm



Solo Scale

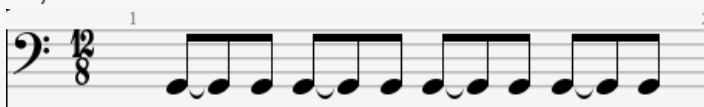
G Major Scale



0 3 = Root notes

Standard Notation

Rhythm



Solo Scale

