



Song Form

Intro, Verse, Chorus, Verse, Chorus, Bridge, Chorus

Genre
Pop

Language
English

Key
E

Tempo
120 BPM

Chords:

G	Am	Bm	C	D	Em	F
I	ii	iii	IV	V	vi	bVII

Verse

Chord diagrams for G, C, G, D are shown above the staff. The staff contains a sequence of slashes representing the rhythm.

Chord diagrams for G, C, B, C, D are shown above the staff. The staff contains a sequence of slashes representing the rhythm.

Chorus

Chord diagrams for G, B, C, D, G, D are shown above the staff. The staff contains a sequence of slashes representing the rhythm, with a repeat sign and 'x3' indicating a three-measure repeat.

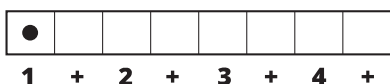
Bridge

Chord diagrams for F and G are shown above the staff. The staff contains a sequence of slashes representing the rhythm.

Chord diagrams for F and D are shown above the staff. The staff contains a sequence of slashes representing the rhythm.

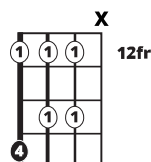
Iconic Notation

Comping Pattern



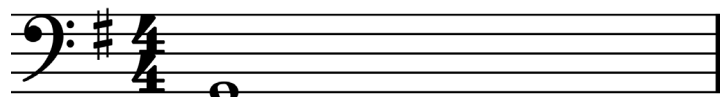
Solo Scale

Gmaj Pentatonic



Standard Notation

Rhythm



Solo Scale

